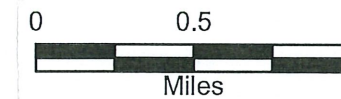


**Figure 2-1
Hydric Soils**

- Soils with Hydric Inclusions
- Hydric Soils



The road centerline, railroad centerline, and parcel boundary data is maintained by the Medina County Highway Engineer's Office.

The data used to prepare this map may be updated frequently and may not represent the most current information. To verify the accuracy of this map, please contact the Community or agency from which the data originates directly.

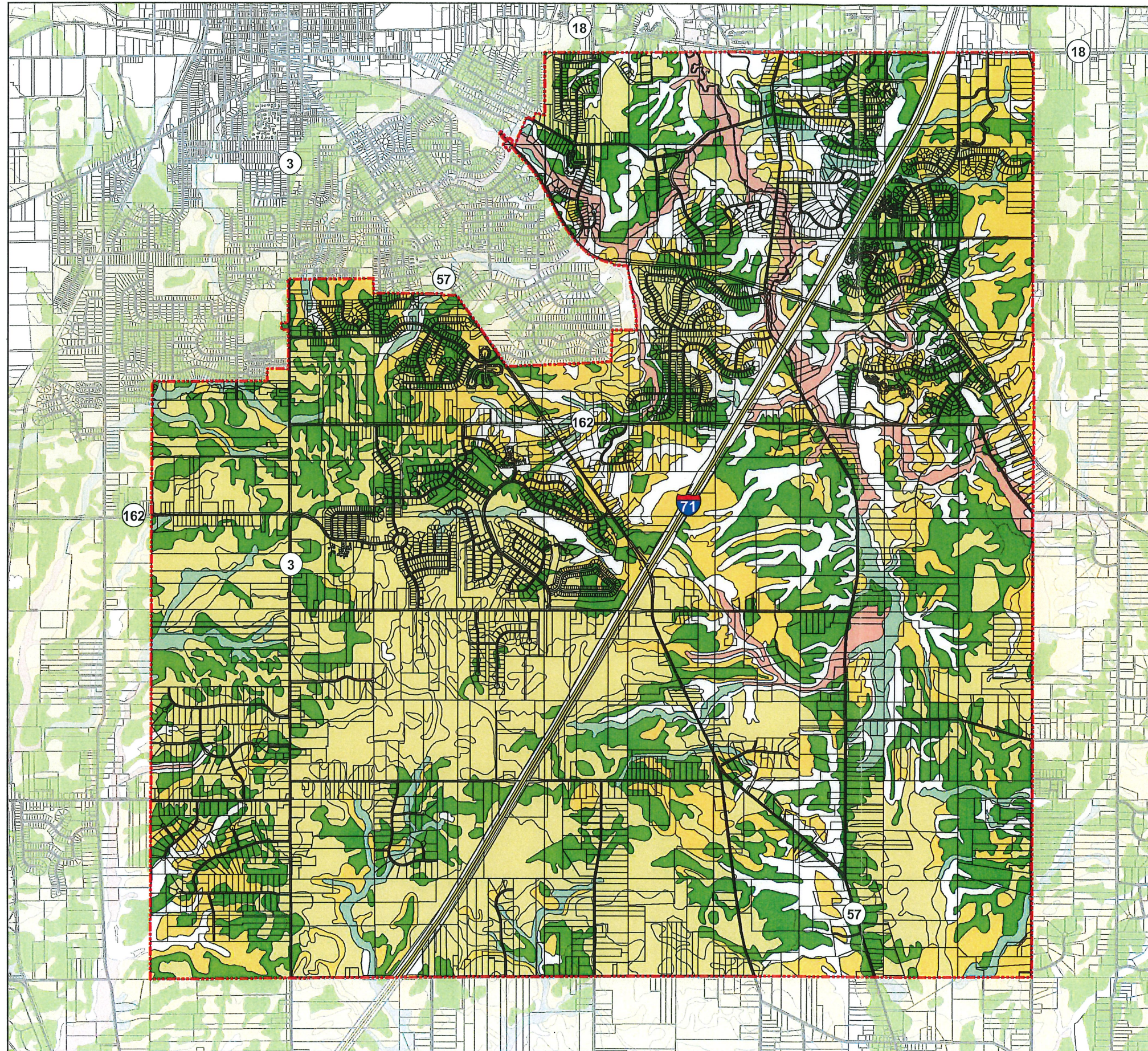
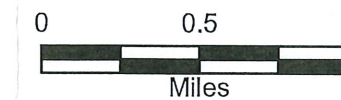


Figure 2-2 Prime Agricultural Soils

- All Areas are Prime Farmland
- Prime Farmland if Drained
- Prime Farmland if Protected from Flooding
- Prime Farmland if Drained and Protected from Flooding
- Farmland of Local Importance



The road centerline, railroad centerline, and parcel boundary data is maintained by the Medina County Highway Engineer's Office.

The data used to prepare this map may be updated frequently and may not represent the most current information. To verify the accuracy of this map, please contact the Community or agency from which the data originates directly.

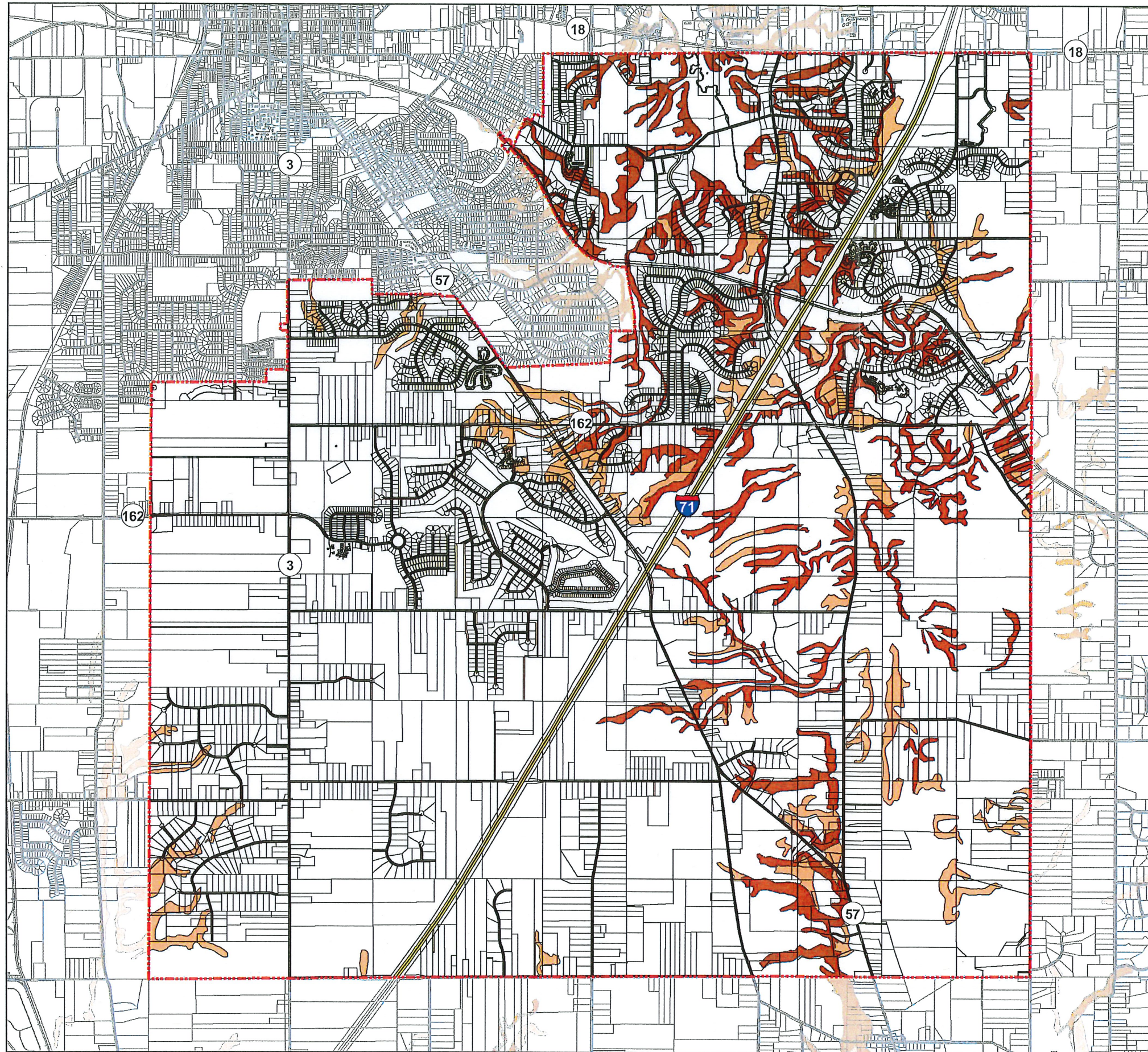
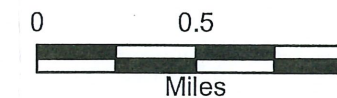


Figure 2-3 Steep Slope Soils

- 12 - 25 Percent Slope
- 25 - 70 Percent Slope

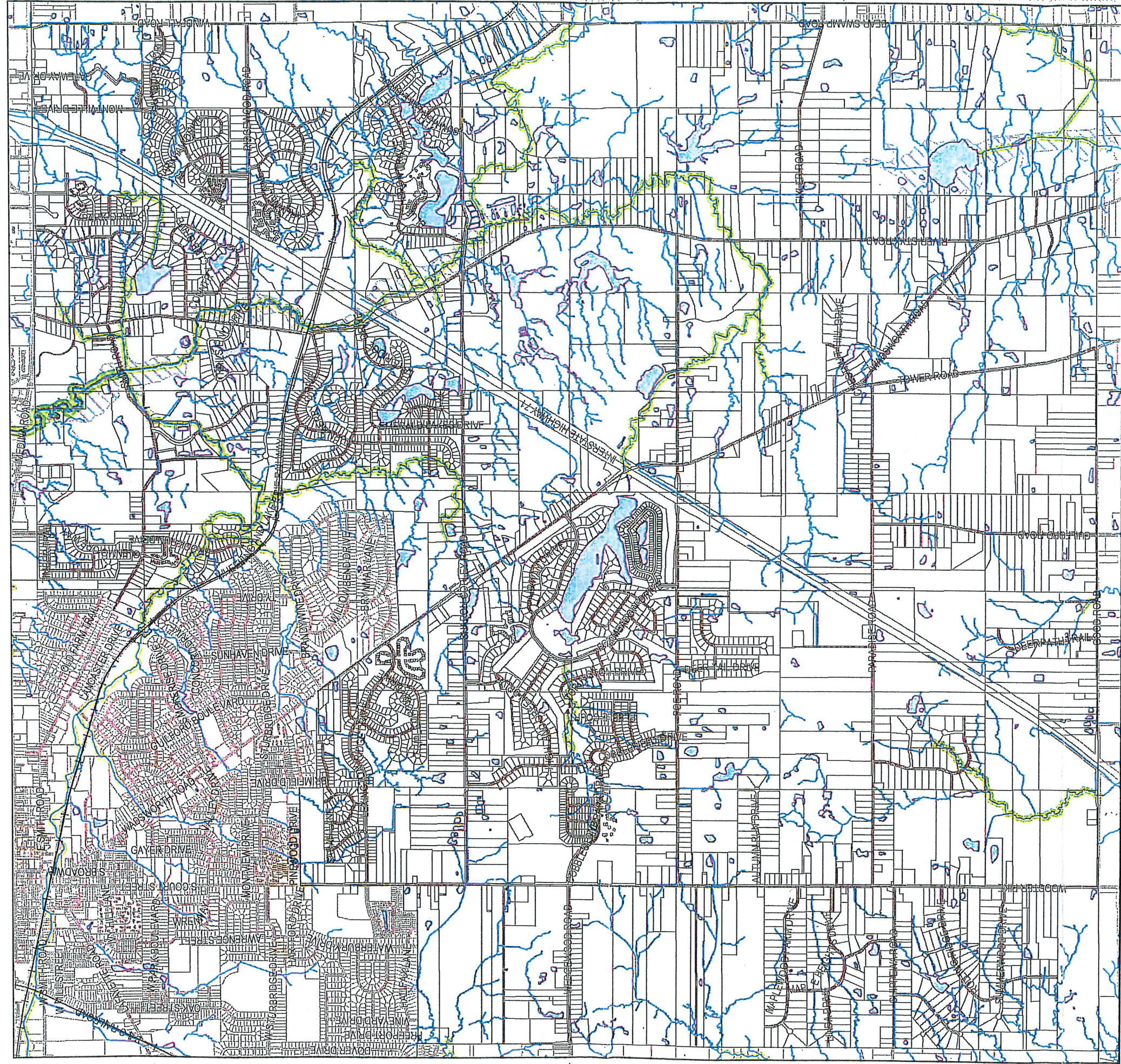


The road centerline, railroad centerline, and parcel boundary data is maintained by the Medina County Highway Engineer's Office.

The data used to prepare this map may be updated frequently and may not represent the most current information. To verify the accuracy of this map, please contact the Community or agency from which the data originates directly.

Montville Township

Riparian Setback Guide Map



- 120ft setback
- 75ft setback
- 25ft setback
- FEMA 100-year floodplain
- parcels

* Setbacks are measured outward from each bank of streams with defined bed and banks.

Recommended setback distances are based on stream drainage areas as follows:

drainage area	setback
20 sq mi to 300 sq mi	120ft
0.5 sq mi to 20 sq mi	75ft
less than 0.5sq mi	25ft

Stream locations and drainage areas were created from available county GIS layers. Some smaller streams may not be shown while other bodies shown may actually not qualify as streams. Accuracy should be verified in the field.

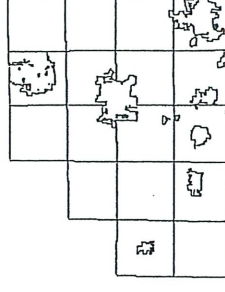


Figure 2-4

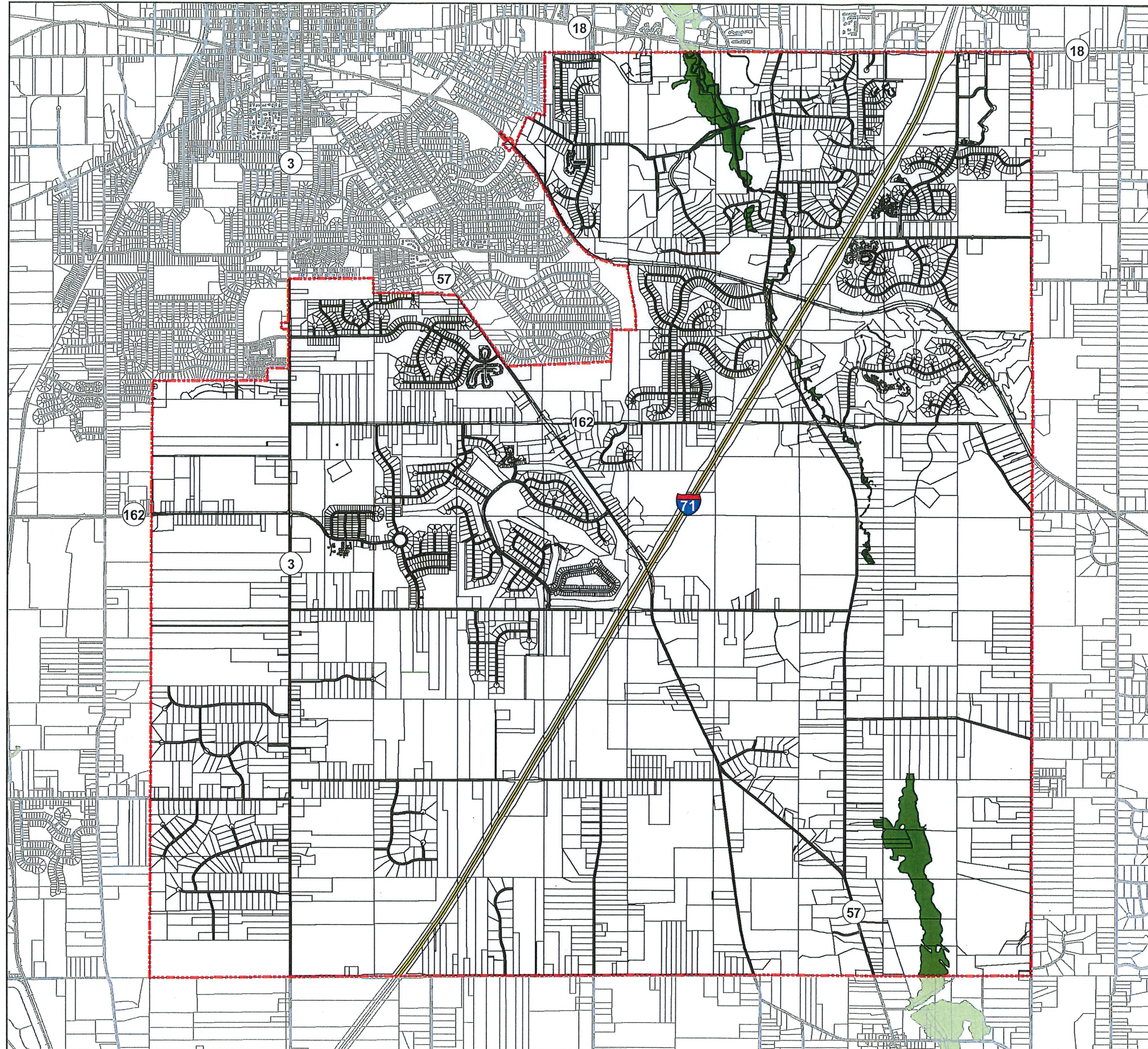
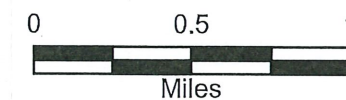
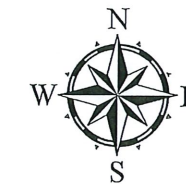


Figure 2-5 100 Year Flood Hazard

 100 Year Flood Hazard



Note: The flood data shown on this map was produced by FEMA. Please ask to see the FEMA specification and user guide. Official flood data mapping may be obtained from the Medina County Engineer's Office, 791 W. Smith Road.

The quality, accuracy, and reasonableness of any applications developed using the flood data shown are the sole responsibility of the end user.

The flood data shown is not suitable for engineering applications such as detailed site design and development plans, letters of map change, or submittal of FIRM revisions.

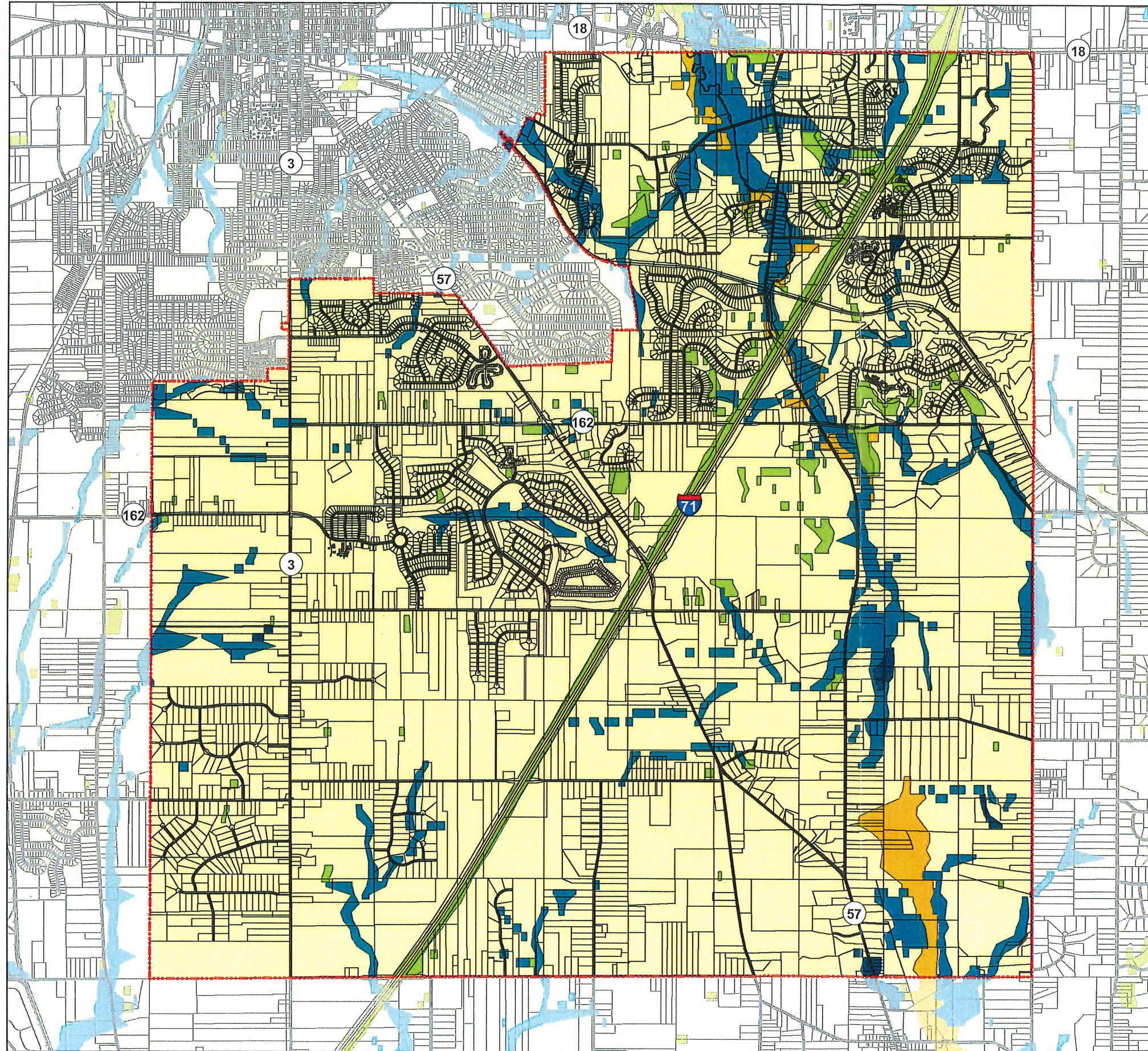
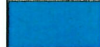
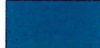
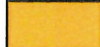
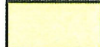
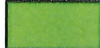
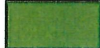
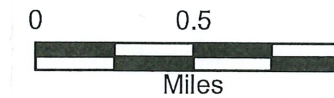


Figure 2-6 Flooding Potential

-  Flooded Less Than Once in 2 Years on Average
-  Flooded More Than Once in 2 Years on Average
-  Possibility of Flooding
-  No Reasonable Possibility of Flooding
-  Not Rated-No Reasonable Possibility of Flooding
-  Not Rated-Possibility of Flooding



The road centerline, railroad centerline, and parcel boundary data is maintained by the Medina County Highway Engineer's Office.

The data used to prepare this map may be updated frequently and may not represent the most current information. To verify the accuracy of this map, please contact the Community or agency from which the data originates directly.

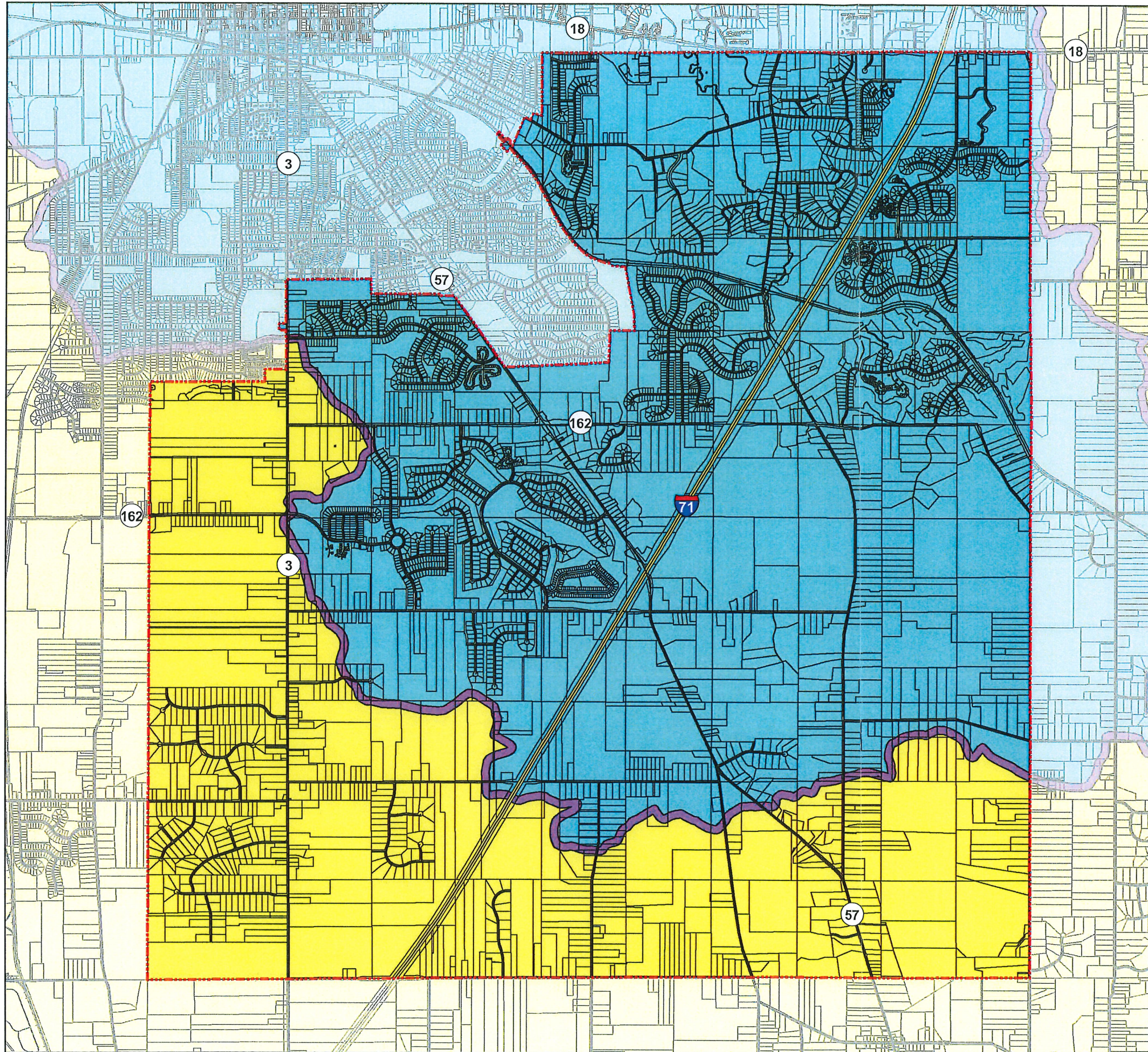
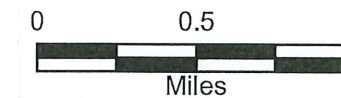


Figure 2-7
Lake Erie and Ohio River
Watershed Divide

- Lake Erie Watershed
- Ohio River Watershed
- Sub-Continental Divide



The road centerline, railroad centerline, and parcel boundary data is maintained by the Medina County Highway Engineer's Office.

The data used to prepare this map may be updated frequently and may not represent the most current information. To verify the accuracy of this map, please contact the Community or agency from which the data originates directly.

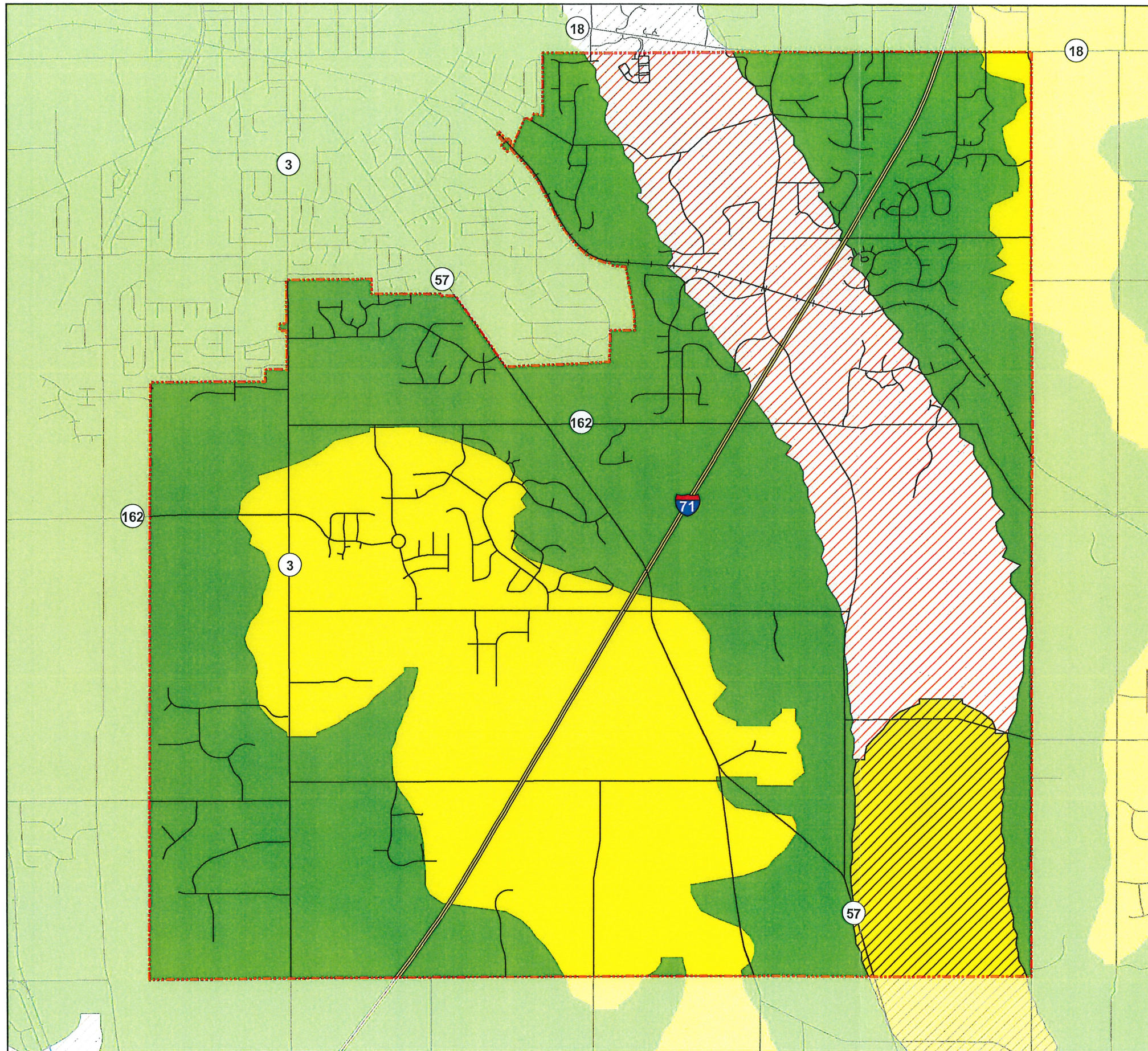






Figure 2-8 Ground Water Availability

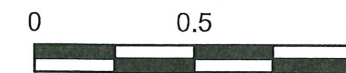
- 

Yields of less than 25 GPM can be developed. Ground water obtained from the thin, not extensive, sand and gravel deposits interbedded with thick clayey till. Well yields range from 3 to 10 GPM, although the depth may exceed 300 feet. If permeable deposits are not encountered wells may be drilled into the underlying bedrock in search of a potable supply.
- 

Yields of less than 25 GPM can be developed. Ground water developed from the sandstone and shale formations of the Cuyahoga Group. Yields of 3 to 15 GPM, adequate for private domestic supplies, are available. Drillers may encounter thick deposits of clayey till interbedded with thin lenses of sand and gravel in morainal areas. Sand and gravel may yield 3 to 10 GPM where wells are drilled into the underlying bedrock.
- 

Yields of 25 to 100 GPM can be developed. Ground water obtained from the Sharon conglomerate, encountered at depths of less than 100 feet beneath the land surface. Drilled wells yield as much as 50 GPM. Greater yields in excess of 350 GPM, may be available during short periods of intermittent pumping.
- 

Yields of 25 to 100 GPM can be developed. Ground water obtained from deposits of sand and gravel beneath thick clay and/or silt and fine sand. Farm and domestic supplies (3 to 10 GPM) may be available from relatively shallow wells less than 90 feet deep. However, coarse permeable deposits are known to exist at depths ranging from 180 to 430, or more, feet. Properly designed and managed wells may supply satisfactory requirements for small subdivision (less than 100 home) developments.



Miles

2024

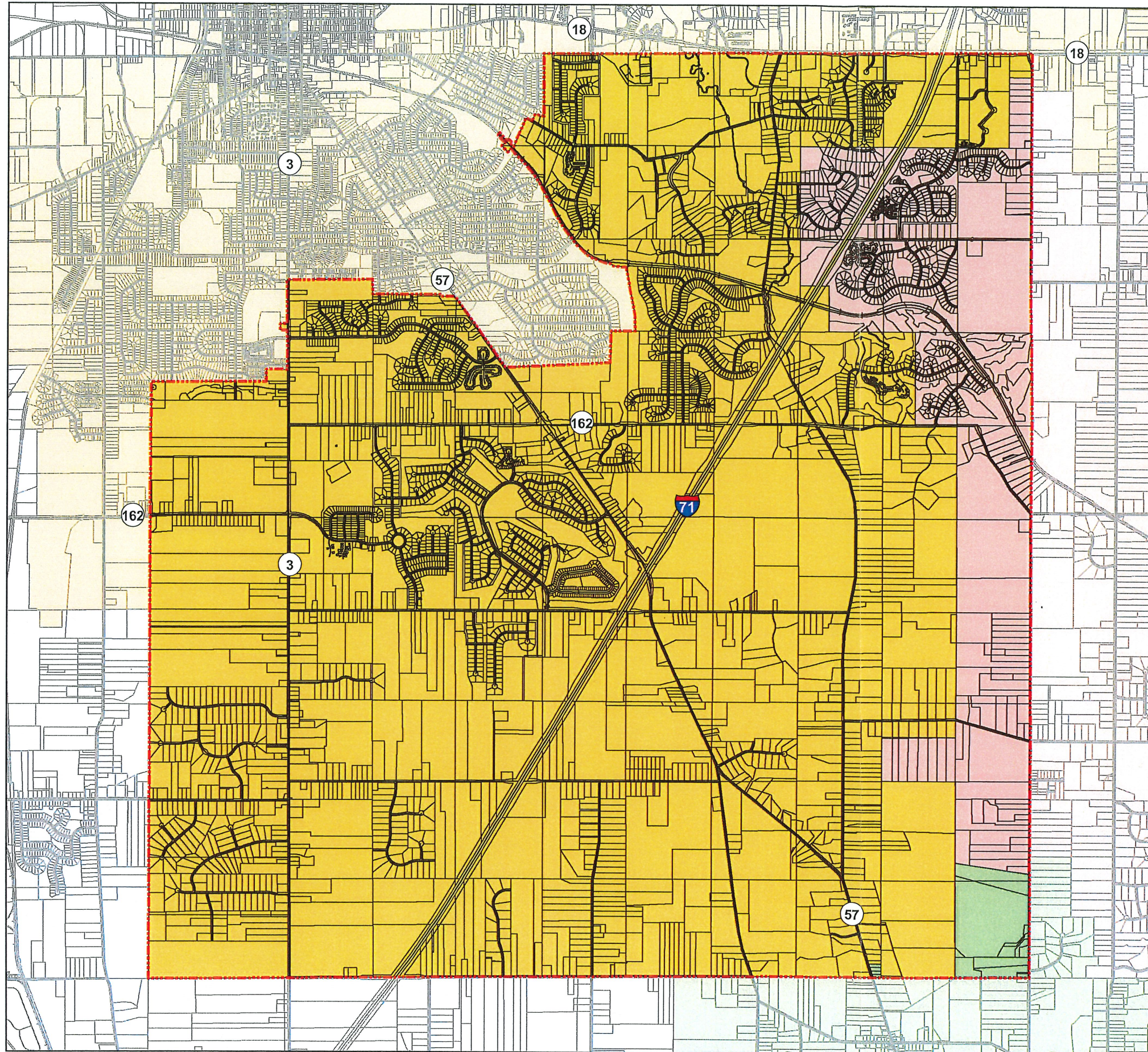
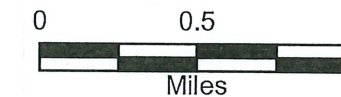


Figure 2-9 School District Boundaries

- Highland Local
- Medina City
- Wadsworth City



The road centerline, railroad centerline, and parcel boundary data is maintained by the Medina County Highway Engineer's Office.

The data used to prepare this map may be updated frequently and may not represent the most current information. To verify the accuracy of this map, please contact the Community or agency from which the data originates directly.



Figure 2-10

Montville Township

Current Land Use

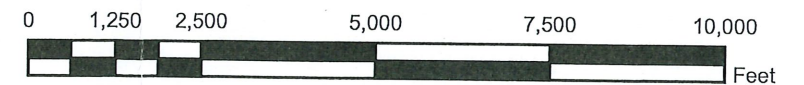
Auditor's Tax Code
2023

Land Use

-  Agriculture
-  Residential, Single
-  Residential, Multi
-  Office
-  Commercial
-  Quasi-public
-  Industrial
-  Tax Abated/exempt
-  Vacant
-  Parcels to Verify Use
-  Jurisdiction Boundary
-  Parcel Boundary



1 inch = 2,750 feet



The data used to prepare this map may change frequently and may not represent the most current information available. To verify the accuracy of this map, please contact the community or agency responsible for the data used.



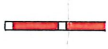






The road centerline, railroad centerline, parcel boundary, and political jurisdiction boundary data is maintained by the Medina County Highway Engineer's office.

The Montville Township proposed land use data is maintained by the Medina County Department of Planning Services in cooperation with the Montville Township Trustees, the Zoning Commission, and the Zoning Office.



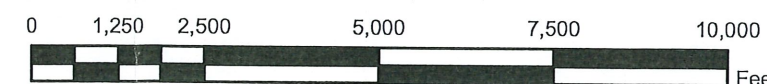
Figure 2-11

Montville Township Joint Economic Development District & Community Reinvestment Area

-  Comm. Reinvestment Area (CRA)
-  Joint Econ. Dev. Dist. (JEDD)
-  Interstate Highway
-  Federal Highway
-  State Route
-  Roads
-  Railroad
-  Jurisdiction Boundary
-  Parcel Boundary



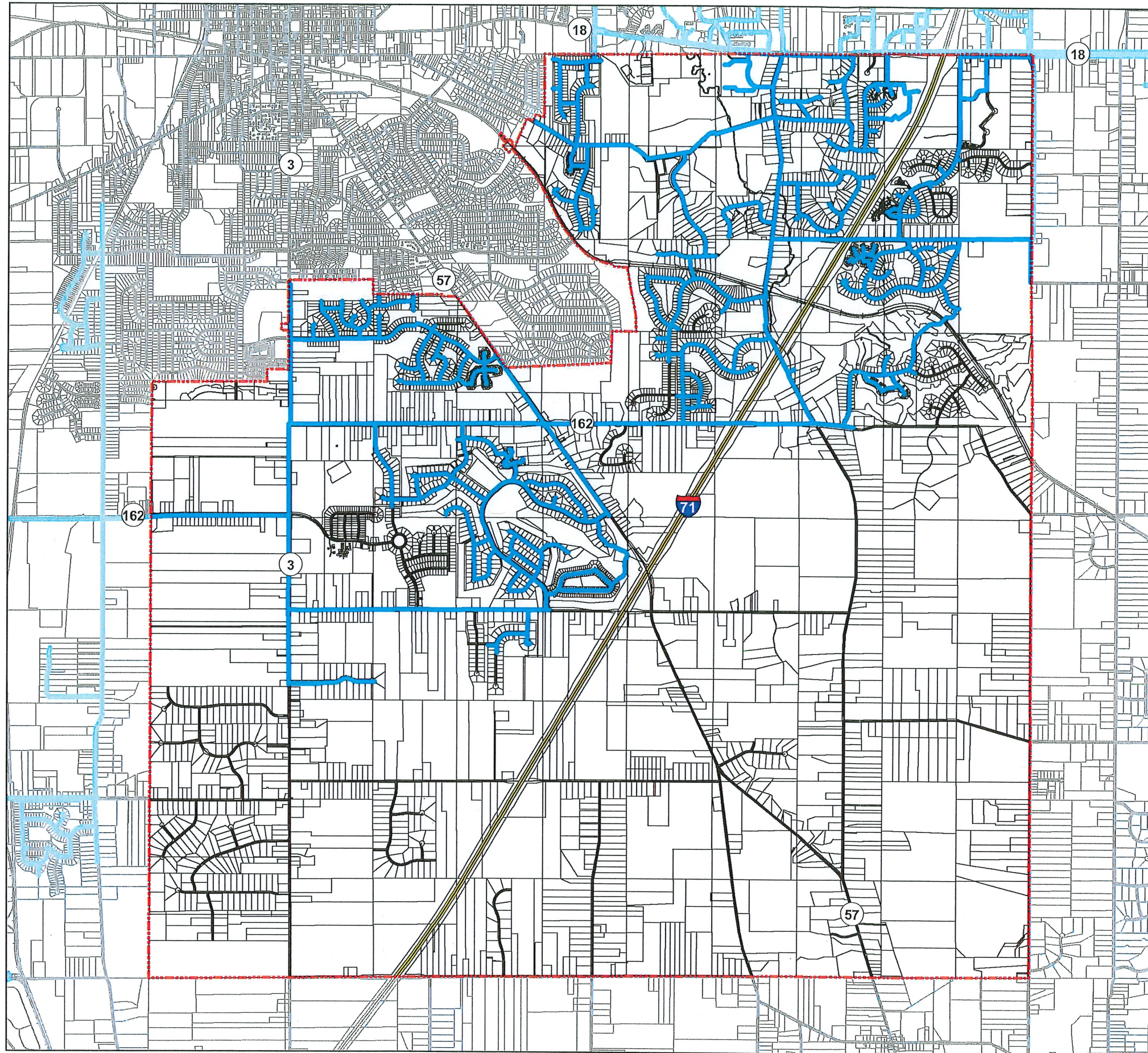
1 inch = 2,750 feet



The data used to prepare this map may change frequently and may not represent the most current information available. To verify the accuracy of this map, please contact the community or agency responsible for the data used.

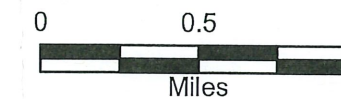
The road centerline, railroad centerline, parcel boundary, and political jurisdiction boundary data is maintained by the Medina County Highway Engineer's office.

The Montville Township geographic information system data is maintained by the Medina County Department of Planning Services in cooperation with the Montville Township Trustees, the Zoning Commission, and the Zoning Office.



**Figure 2-12
Water Mains**

— Water Mains

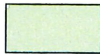
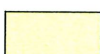




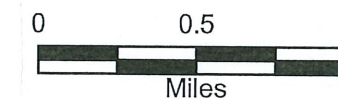
The road centerline, railroad centerline, and parcel boundary data is maintained by the Medina County Highway Engineer's Office.

The data used to prepare this map may be updated frequently and may not represent the most current information. To verify the accuracy of this map, please contact the Community or agency from which the data originates directly.



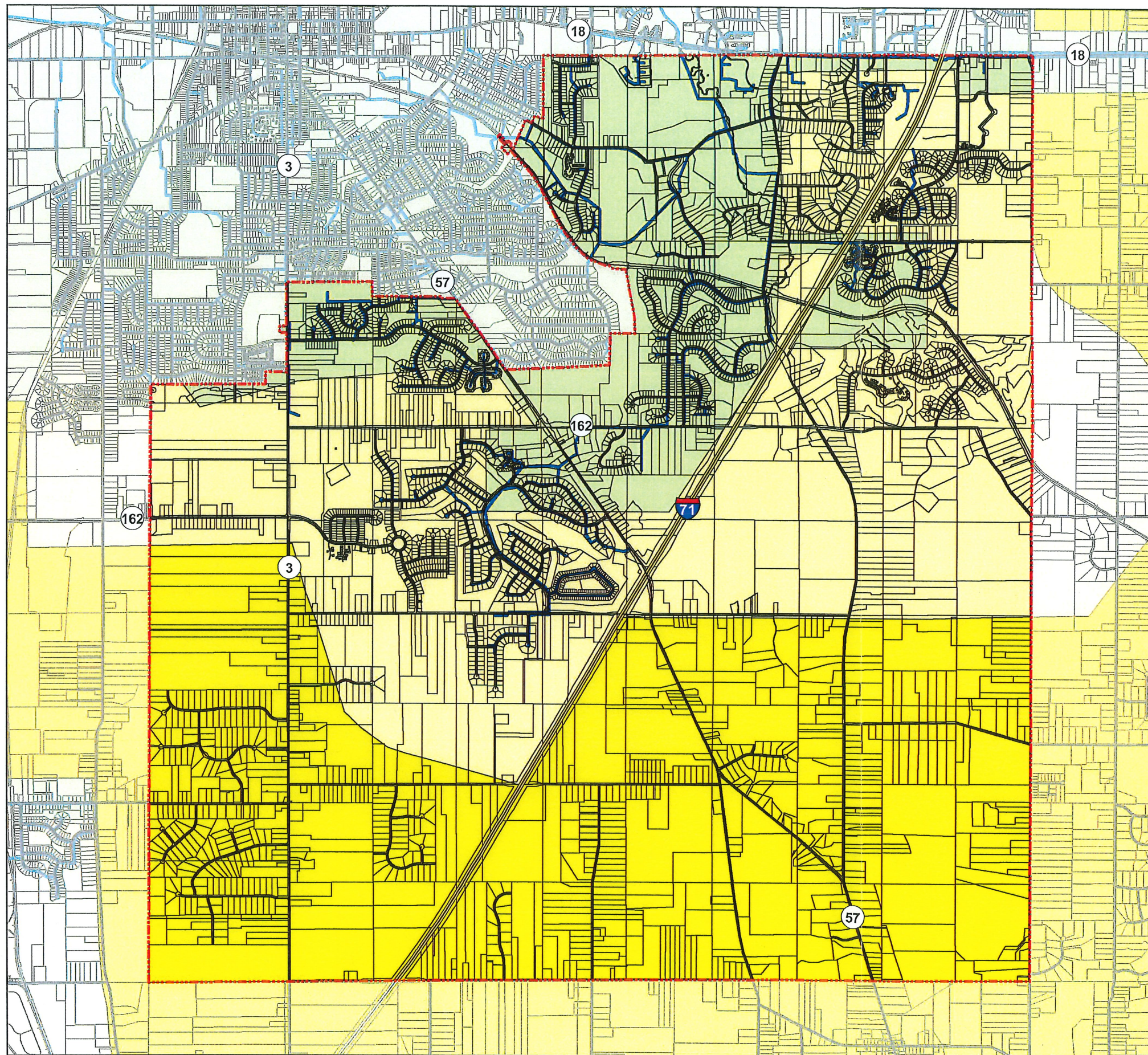
Figure 2-13 Sewer Service Areas

-  Areas currently sewered
-  Limited sewerage likely within the next 20 years with the advice of local officials
-  Areas served by on-site systems
-  Sewer Lines



The road centerline, railroad centerline, and parcel boundary data is maintained by the Medina County Highway Engineer's Office.

The data used to prepare this map may be updated frequently and may not represent the most current information. To verify the accuracy of this map, please contact the Community or agency from which the data originates directly.





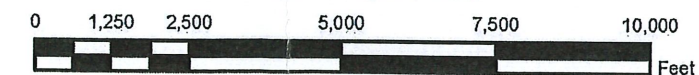
3-1

Montville Township Proposed Land Use 2024

-  Open Space & Recreation
-  Residential
-  Low Density (4.0 + ac.)
-  Medium Density (22,000 sq.ft - 4.0 ac.)
-  High Density (< 22,000 sq.ft.)
- Commercial**
-  Rural Commercial
-  Community Business
-  Highway Commercial
-  Office
-  Town Center
-  Suburban Growth
-  Boundary Mixed Use
-  Jurisdiction Boundary



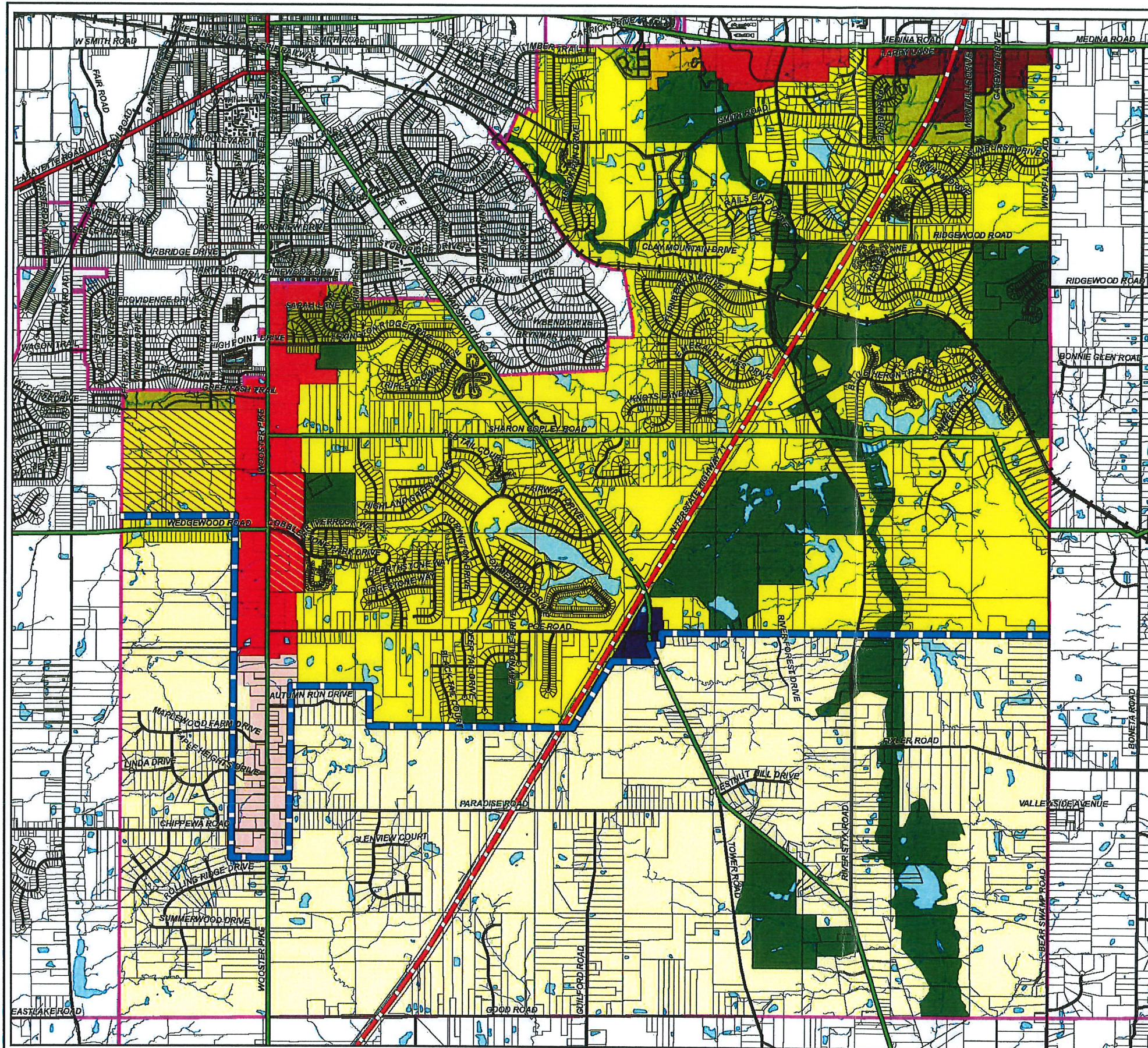
1 inch = 2,750 feet

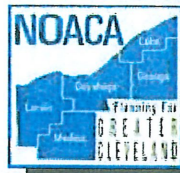


The data used to prepare this map may change frequently and may not represent the most current information available. To verify the accuracy of this map, please contact the community or agency responsible for the data used.

The road centerline, railroad centerline, parcel boundary, and political jurisdiction boundary data is maintained by the Medina County Highway Engineer's office.

The Montville Township proposed land use data is maintained by the Medina County Department of Planning Services in cooperation with the Montville Township Trustees, the Zoning Commission, and the Zoning Office.



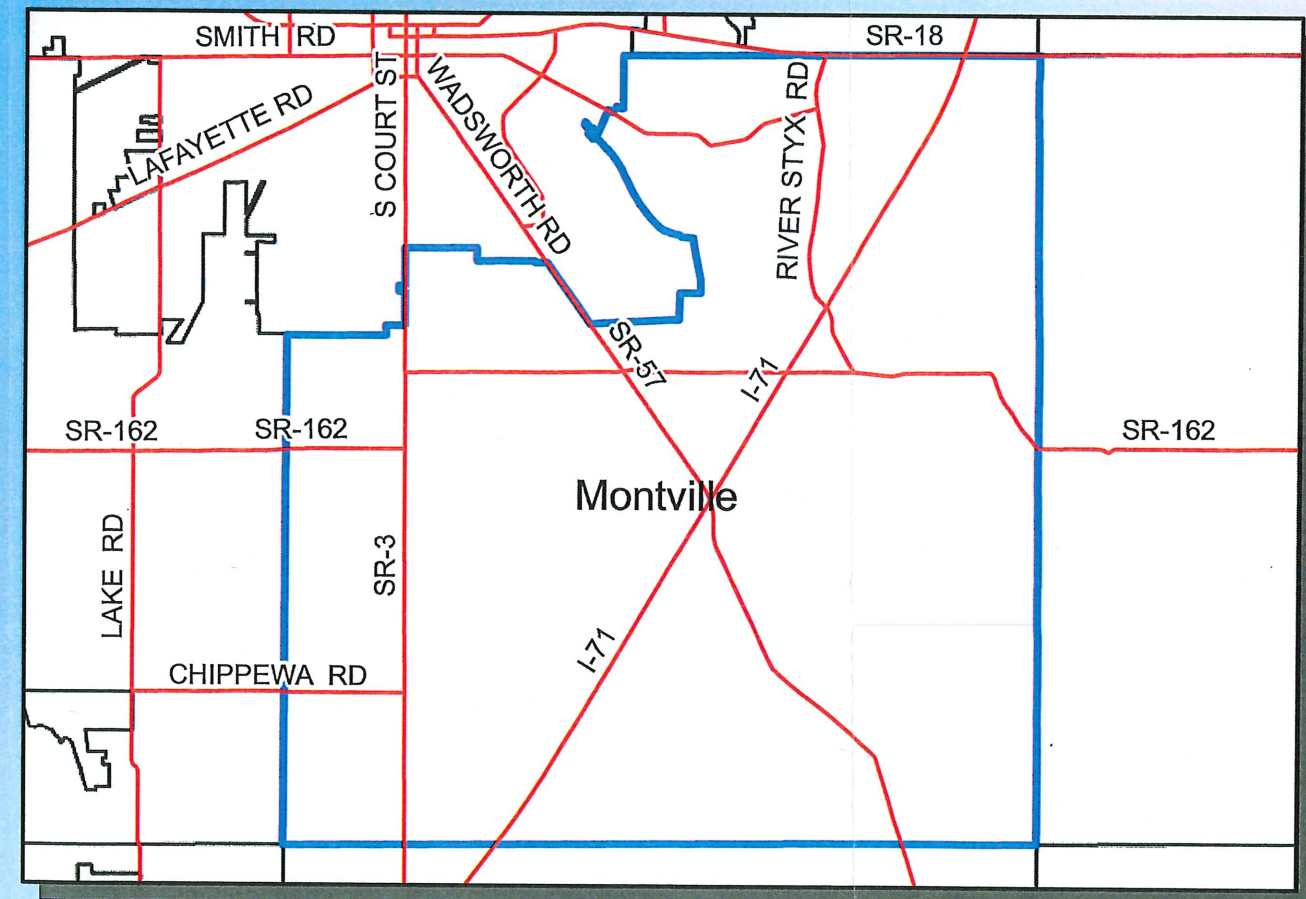
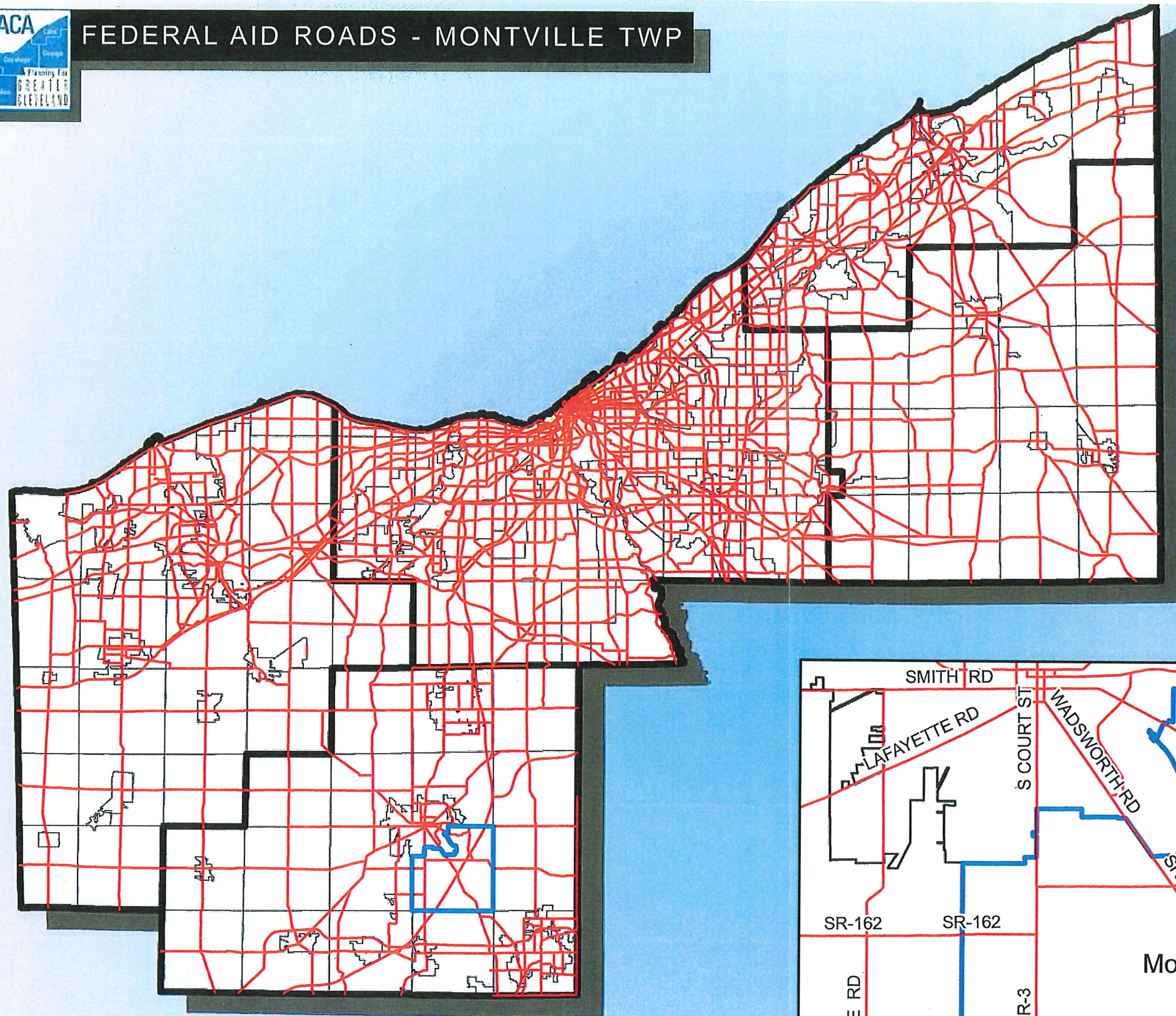


FEDERAL AID ROADS - MONTVILLE TWP

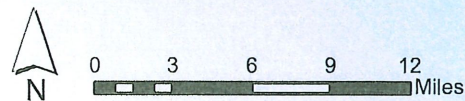


Figure 4-1

Federal Aid System Montville Township



- Federal Aid Roads 2015
- Montville Twp.
- Municipalities
- County Boundary



NOACA makes no representations or warranties with respect to the accuracy and/or completeness of the map.

DATA SOURCES:
NOACA


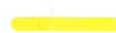






Figure 4-2




Montville Township

Bicycle & Pedestrian Pathways

Road Suitability for Cyclists Recommended Skill Level

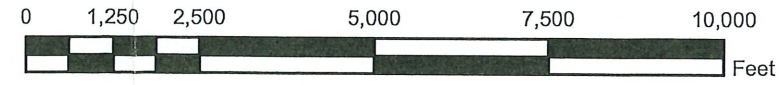
-  Basic
-  Intermediate
-  Experienced
-  Not Suitable

-  Multi-Use Pathway
-  Proposed Pathway

-  Jurisdiction Boundary
-  Park or School
-  Subdivision



1 inch = 2,750 feet



The data used to prepare this map may change frequently and may not represent the most current information available. To verify the accuracy of this map, please contact the community or agency responsible for the data used.

The road centerline, railroad centerline, parcel boundary, and political jurisdiction boundary data is maintained by the Medina County Highway Engineer's office.

The Montville Township geographic information system data is maintained by the Medina County Department of Planning Services in cooperation with the Montville Township Trustees, the Zoning Commission, and the Zoning Office.